



**30 Osgathorpe Road GLADESVILLE NSW**

3 1 1

Peacefully set on an elevated block in a sought-after pocket of Gladesville, this freestanding timber cottage offers a remarkable opportunity for a growing family or for future capitalisation. It enjoys a quiet yet convenient setting just a short walk from shops and transport and is within close proximity of schools, parks, Ryde Aquatic Leisure Centre and other lifestyle amenities.

**Price** : \$ 1,220,000  
**Land Size** : 520 sqm  
**View** : <https://www.awardgroup.com.au/sale/nsw/northern-suburbs/gladesville/residential/house/5230103>

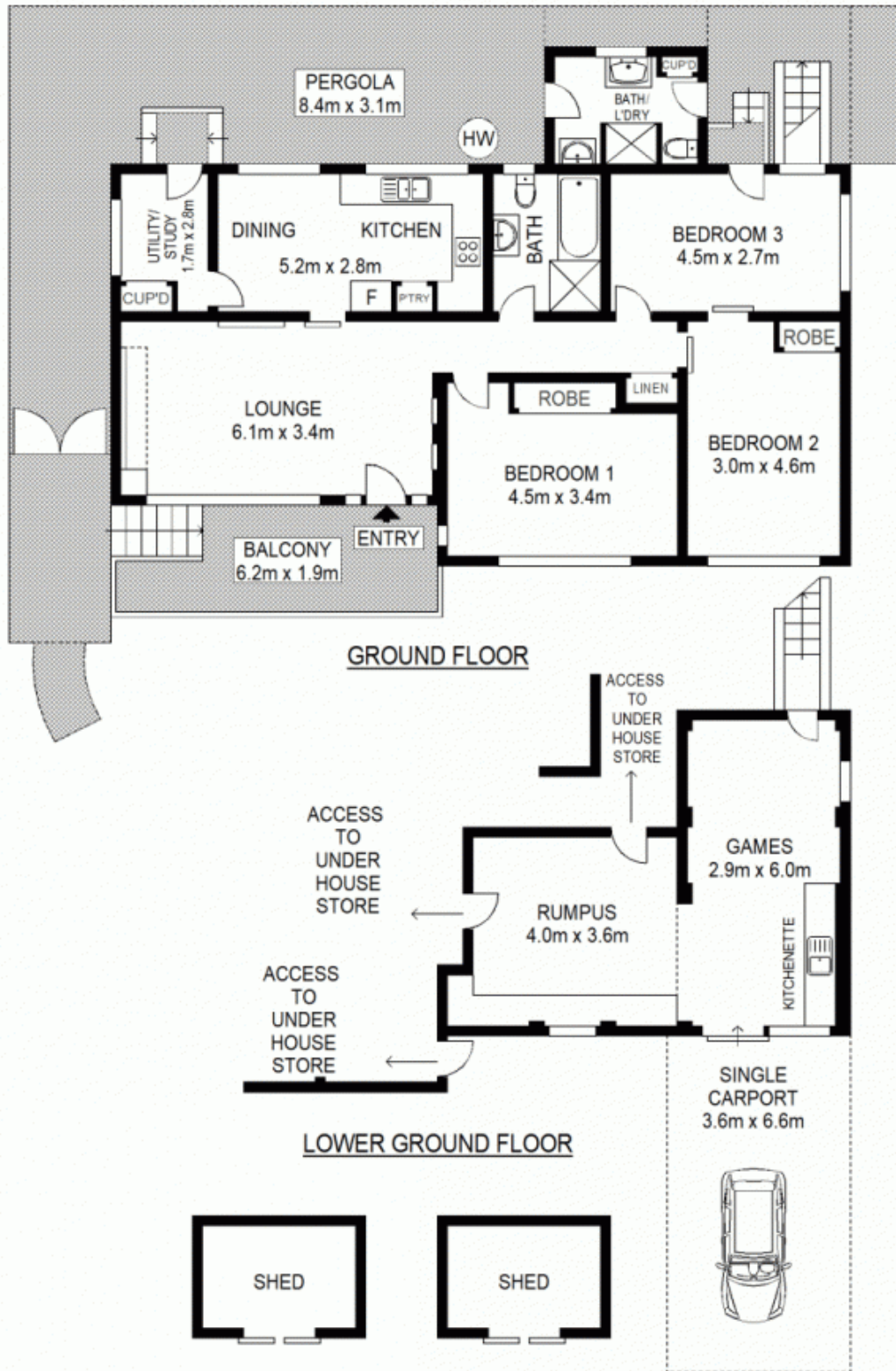
With potential to extend, modernise or knock down and re-build (STCA) this is an opportunity not to be missed!

Ground Level;

- \* Elevated undercover front verandah with peaceful district views
- \* Well-proportioned layout includes separate living and dining



**David Johnson**  
**(02) 9808 1199**



Scale shown in metres. All dimensions herein are approximate and gathered from sources believed to be reliable. Whilst every effort is made for the accuracy of our floor plans, interested parties should rely on their own enquiries. Floor Plans by Industrie Media | [industriemedia.tv](http://industriemedia.tv)

S2

30 Osgathorpe Road, Gladesville