



2/58 Epping Road LANE COVE NSW

2 1 1

This pleasantly presented 2 bedroom unit offers private access and is positioned in a quiet spot away from the street. Situated a stone's throw away from direct bus links to Macquarie Park, North Sydney and the CBD this property would make for a great first home or investment.

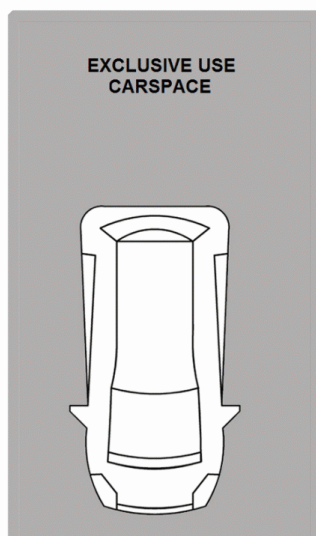
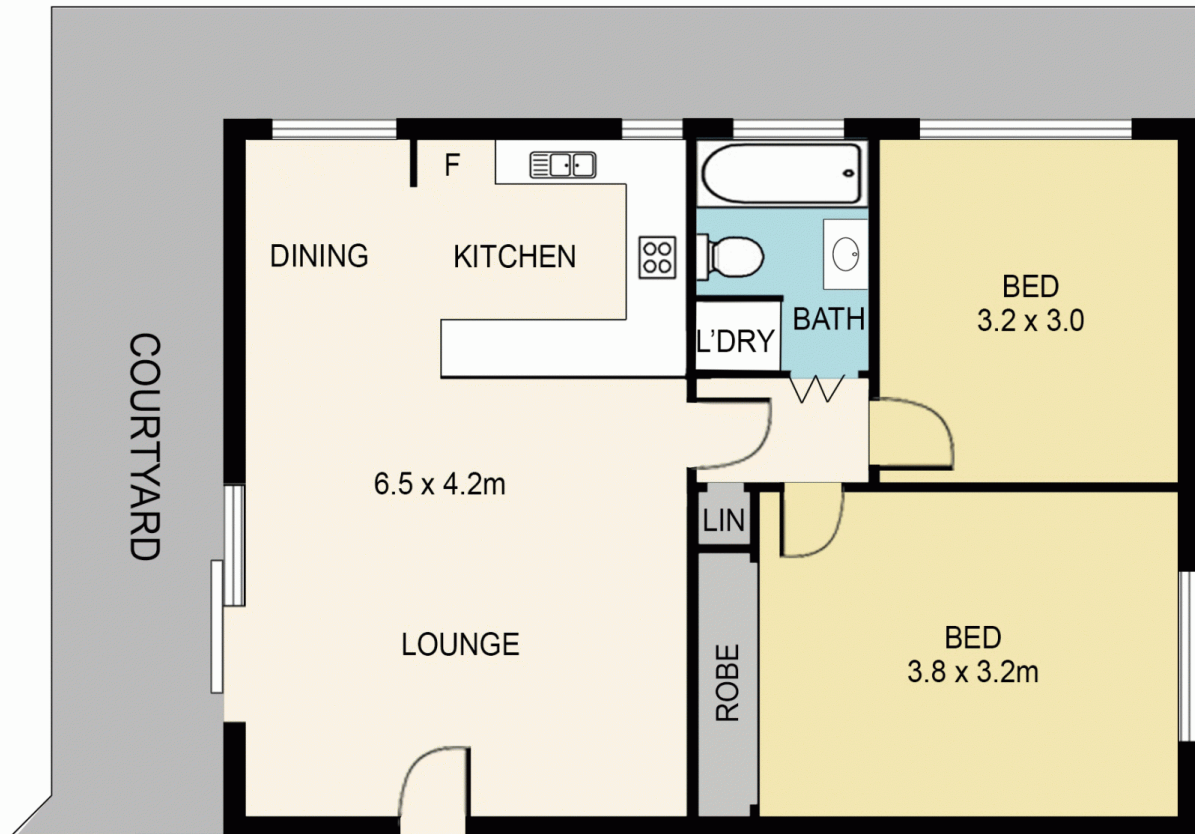
Land Size : 63.2 sqm
View : <https://www.awardgroup.com.au/sale/nsw/north-shore-lower/lane-cove/residential/unit/5230187>

- Ground floor position with 63.2sqm in total
- Renovated kitchen including Miele dishwasher and freestanding stainless-steel cooker
- Two well-sized, carpeted bedrooms with large built-in robe in the main: both bedrooms' windows have double glazing
- Designated dining area leading off kitchen
- Open-plan living room with timber flooring underfoot and ample space for a generous lounge suite
- Updated bathroom with internal laundry facilities
- Security complex with exclusive-use car space



Leighton Avery
(02) 9808 1199

2/58 EPPING ROAD, LANE COVE



DISCLAIMER
DIMENSIONS ARE APPROXIMATE AND SHOULD ONLY BE USED AS A GUIDE.
THEY ARE NOT TO SCALE AND NO LIABILITY WILL BE ACCEPTED.