



9/9-11 Meadow Crescent Meadowbank NSW

2  1  1 

Ideally positioned directly across the road from Memorial Park, this beautifully presented 2 bedroom unit is larger than most other 2 bedroom units in the street and has the added bonus of 2 balconies. Proximity to local train and ferry services, accessible within a few minutes' walk, is also a standout feature. Other features include:

View : <https://www.awardgroup.com.au/sale/nsw/northern-suburbs/meadowbank/residential/unit/5230193>

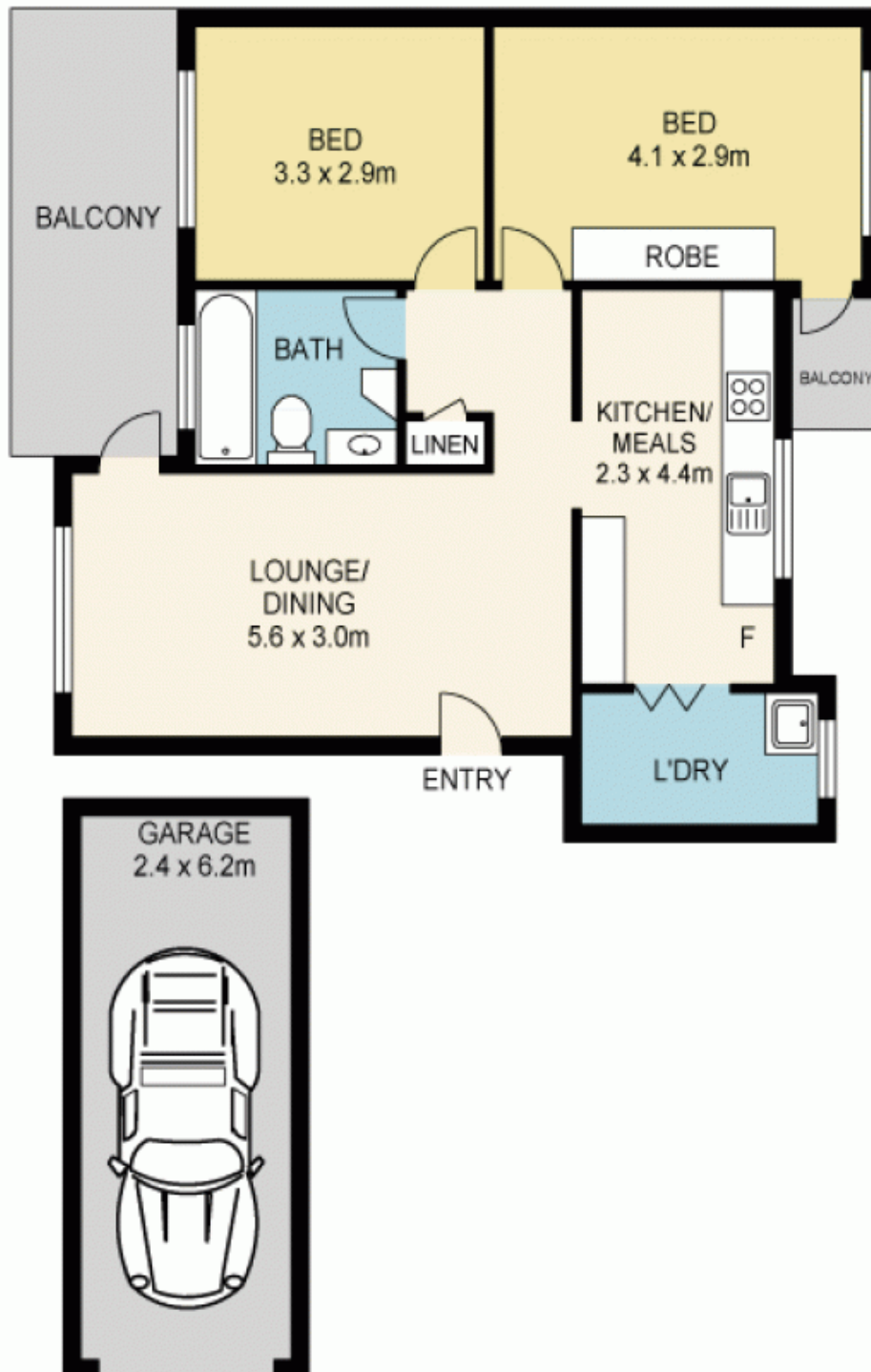
Property Highlights:

- Light and bright combined lounge and dining upon entry
- Renovated, double galley-style kitchen with plenty of storage and bench space
- Large main bedroom with built-in robe and own private balcony
- Larger than average second bedroom
- Neat and tidy family bathroom with shower over bath
- Generous private balcony with treetop and district views



Leighton Avery
(02) 9808 1199

9/9 MEADOW CRESCENT, MEADOWBANK



DISCLAIMER
DIMENSIONS ARE APPROXIMATE AND SHOULD ONLY BE USED AS A GUIDE.
THEY ARE NOT TO SCALE AND NO LIABILITY WILL BE ACCEPTED.