



2/40 Marsden Road ERMINGTON NSW

4 3 1

Set in a blue-ribbon locale, bordering West Ryde, this impressive dual-level contemporary home offers an abundance of living space, sunny north easterly aspect and is situated in a private complex of only 3 townhouses. It's conveniently located only 6 minutes from Eastwood Centre and is within close proximity of multiple transport options, schools, shops, parks and the Parramatta River.

View : <https://www.awardgroup.com.au/sale/nsw/parramatta/ermington/residential/townhouse/5230287>

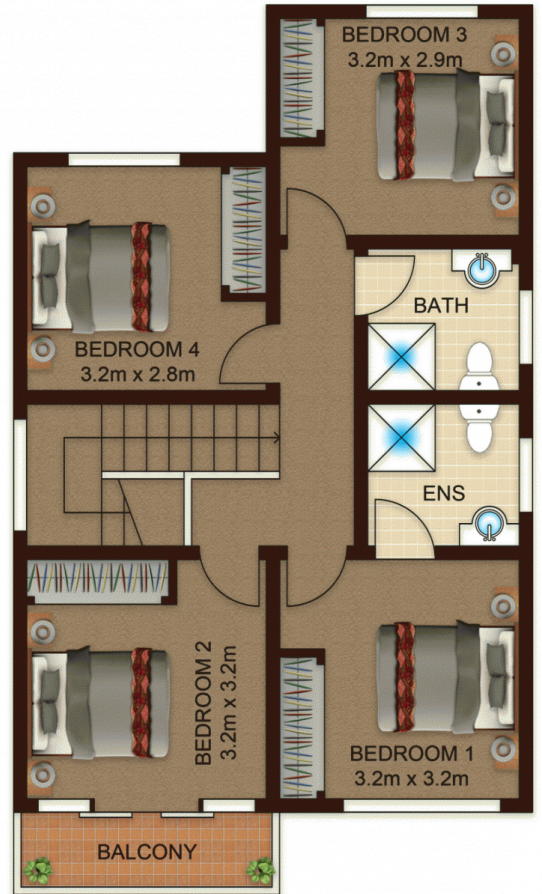
- 4 bedrooms with built-in robes + study alcove
- The spacious master suite has its own bathroom
- Generous North East facing air-conditioned open plan living area leading out to rear yard
- Contemporary gas kitchen with 40mm stone bench tops, stainless steel appliances and ample cupboard storage
- Separate dining room
- Two stylish family bathrooms tiled floor to ceiling (with bath on lower level)



David Johnson
(02) 9808 1199



GROUND FLOOR



FIRST FLOOR

