



115 Cobham Avenue MELROSE PARK NSW

3 1 1

Boasting a level 486sqm parcel of land with an east facing facade, this full brick bungalow offers an outstanding entry point into the ever-popular Melrose Park property market. With a spacious backyard this is one for the shortlist!

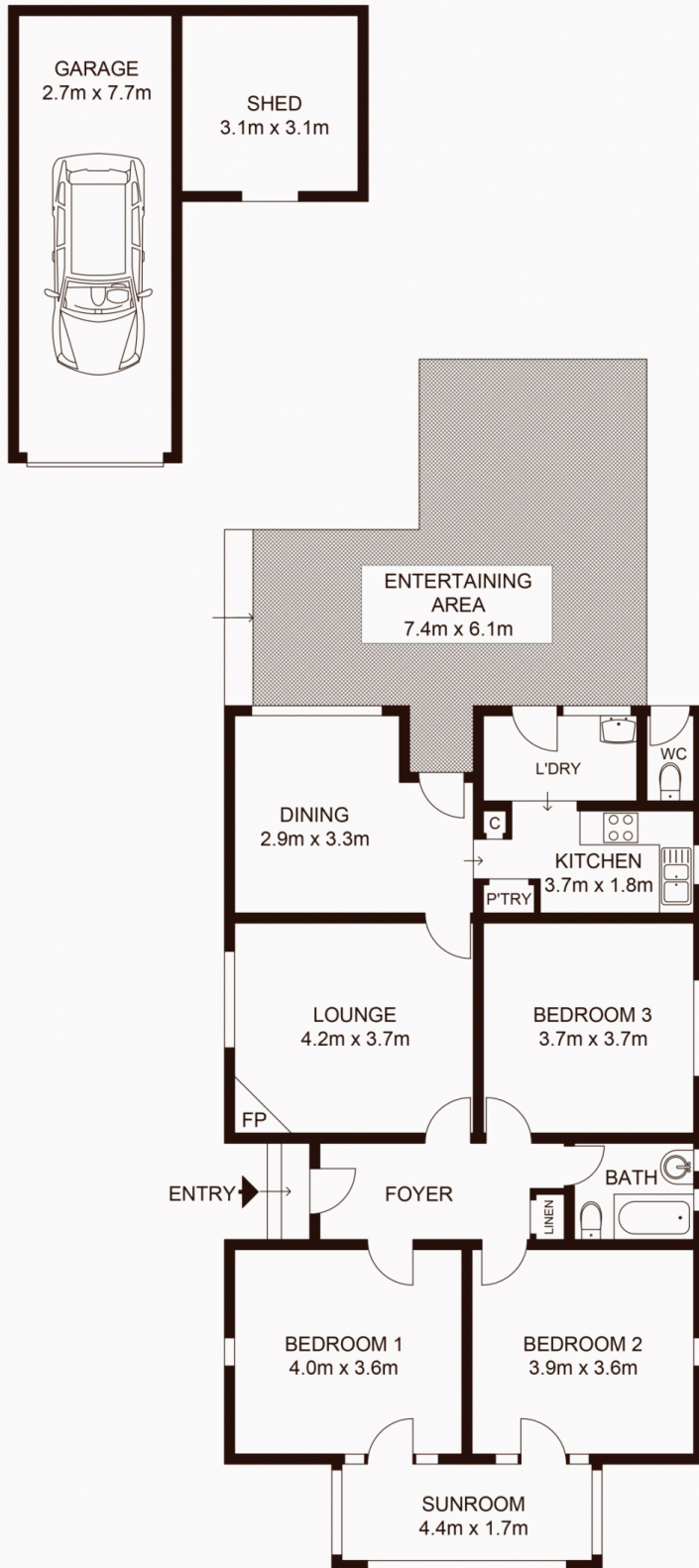
Land Size : 486 sqm
View : <https://www.awardgroup.com.au/sale/nsw/northern-suburbs/melrose-park/residential/home-use/5230370>

Property Highlights |

- 3-bedrooms of accommodation, 2 with access to an east facing sun-room or study
- Separate family lounge room with polished floorboards
- Modern kitchen with stainless steel appliances including dishwasher
- Separate dining room to the rear of the property
- Family bathroom with shower over bath
- Second separate toilet
- Side access to an automated single lock-up garage and garden shed



David Johnson
(02) 9808 1199



SITE PLAN

