



**1/324 Marsden Road Carlingford NSW**

**3**  **3**  **2** 

Spacious, 2 Courtyards, Bush Backdrop, Gas Cooking, Close to Amenities

Downstairs comprises of

Front Courtyard, Entry Foyer, large lounge room & separate dining room open to the back courtyard.

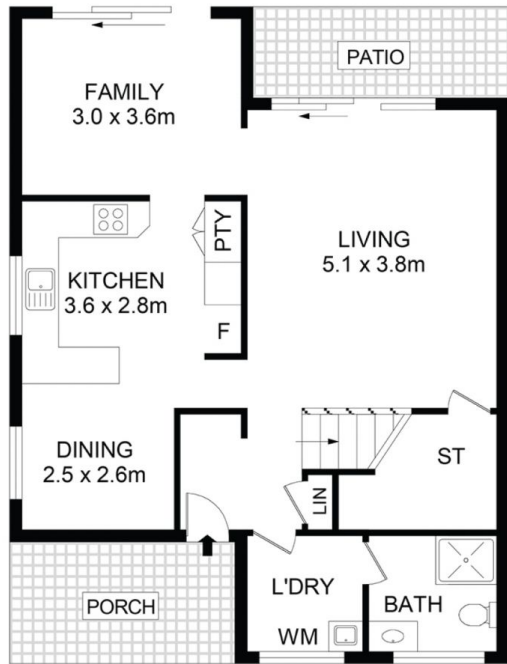
Open-plan kitchen with stone benchtops, gas cooking plenty of cupboard and bench space and pantry cupboard. New flooring in kitchen. Tiled family room. Laundry and guest bathroom and toilet.

Upstairs has 3 large bedroom with built-in robes. The main has an ensuite and opens to the rear balcony as does the second. Updated bathroom with separate toilet.

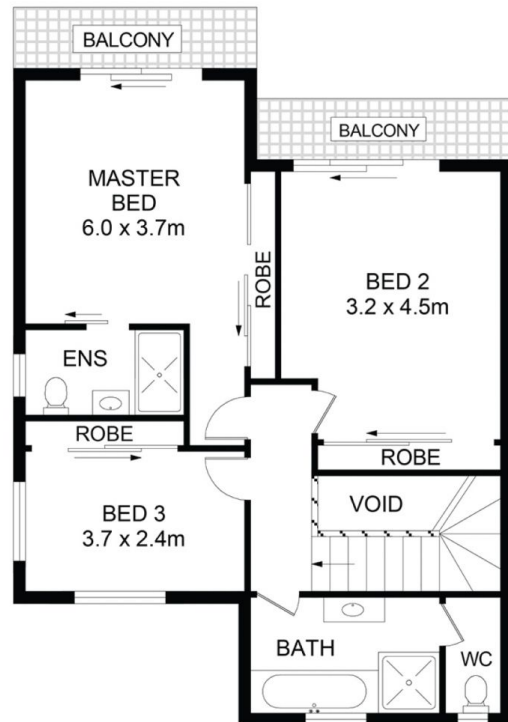
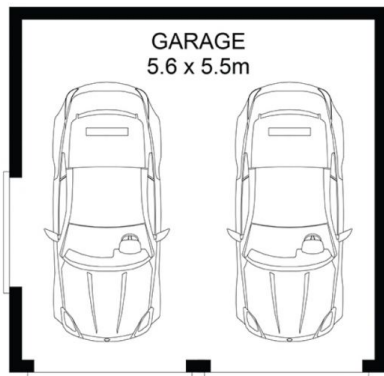
Wooden flooring in the dining room. Ceiling fans. Double garage. Double glazing on some windows. NOTE: the gazebo nor the air conditioners will be included.

Close to Carlingford Village and shopping centre, central handy location to school, bus and train.

**View** : <https://www.awardgroup.com.au/lease/nsw/north-ern-suburbs/carlingford/residential/townhouse/6427609>



GROUND LEVEL



FIRST LEVEL

# 1/324 Marsden Road Carlingford



DISCLAIMER

DIMENSIONS ARE APPROXIMATE AND SHOULD ONLY BE USED AS A GUIDE  
THEY ARE NOT TO SCALE AND NO LIABILITY WILL BE ACCEPTED