



**35/21-27 Meadow Crescent Meadowbank NSW**

**2** **1** **1**

Offering sun drenched interiors thanks to its northern aspect, this tastefully renovated two bedroom unit boasts well proportioned bedrooms, as new kitchen, bathroom and a large open plan living/dining area. The property is also within a short stroll of Meadowbank Train Station & Ferry Wharf, which will make your daily commute a breeze.

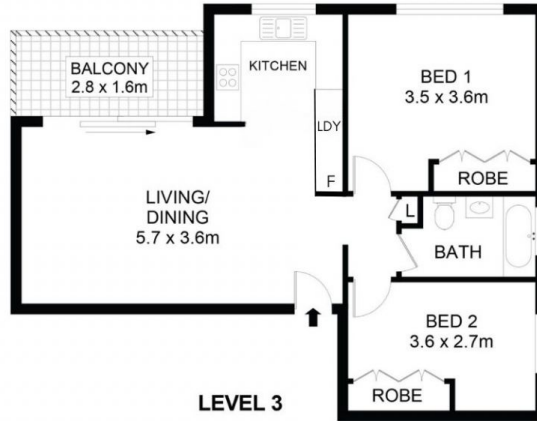
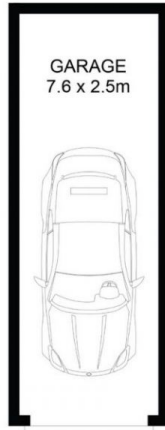
**View :** <https://www.awardgroup.com.au/lease/nsw/north-ern-suburbs/meadowbank/residential/unit/7614222>

**Property Highlights:**

- Northern aspect yielding great natural sunlight
- A large north facing balcony
- Modern kitchen with ample cupboard and bench space with quality appliances including dishwasher
- Internal laundry facilities in kitchen (Front load washing machine included)
- Good sized living area incorporating space for a dining room table



**Rentals Team**  
**(02) 9808 1199**



**AwardGroup**  
REAL ESTATE

35/21-27 Meadow Crescent, Meadaowbank

Disclaimer | Floor plan measurements are approximate and are for illustrative and guide purposes only. While we cannot doubt the floor plan's accuracy, we make no guarantee, warranty, or representation as to the accuracy and completeness of the floor plan. Interested parties are to rely upon their own enquiries.