



**28 Wattle Street Rydalmere NSW**

7 4 2

This stunning two-story home boasts an oversized floorplan with multiple indoor and outdoor living areas making it perfect for entertaining family, work colleagues or friends. The seamless blend of quality fixtures and fittings are on display from the moment you take step through the front door with a selection of bedrooms to both the ground level and first floor. You'll love relaxing in the formal carpeted living room to the front of the house or the open plan living room room to the rear of the property that flow perfectly out to the undercover alfresco dining and over the grassy rear yard

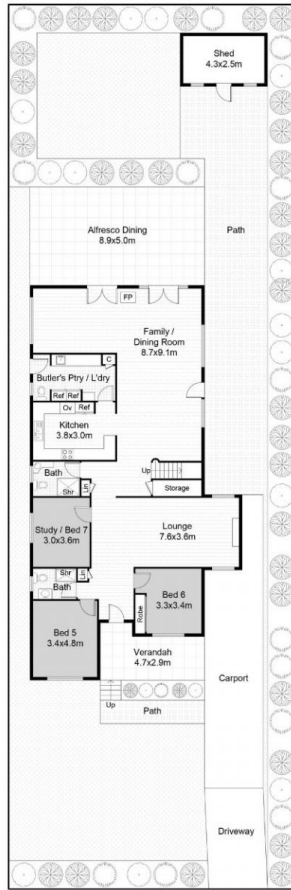
**View :** <https://www.awardgroup.com.au/lease/nsw/parra-matta/rydalmere/residential/house/7617399>



**Rentals Team**  
**(02) 9808 1199**

Property features include:

? Six carpeted bedrooms of accommodation in total with two on the ground floor and four on the first floor including a luxurious master suite



LOWER LEVEL PLAN  
ON SITE PLAN



UPPER  
LEVEL PLAN



**AwardGroup**  
REAL ESTATE

28 Wattle Street, Rydalmere

Disclaimer | Floor plan measurements are approximate and are for illustrative and guide purposes only. While we cannot doubt the floor plan's accuracy, we make no guarantee, warranty, or representation as to the accuracy and completeness of the floor plan. Interested parties are to rely upon their own enquiries.