



**27 Wharf Road Melrose Park NSW**

3 1 2

Located within the popular riverside suburb of Melrose Park, this spacious 3-bedroom home offers dual living areas, 2 bathrooms, and loads of off-street parking. Positioned within easy walking distance of Melrose Park Primary, Ermington Public, and multiple local bus services, you'll love all the amenities the suburb and surroundings have to offer.

**View :** <https://www.awardgroup.com.au/lease/nsw/north-ern-suburbs/melrose-park/residential/house/7901504>

**Property highlights:**

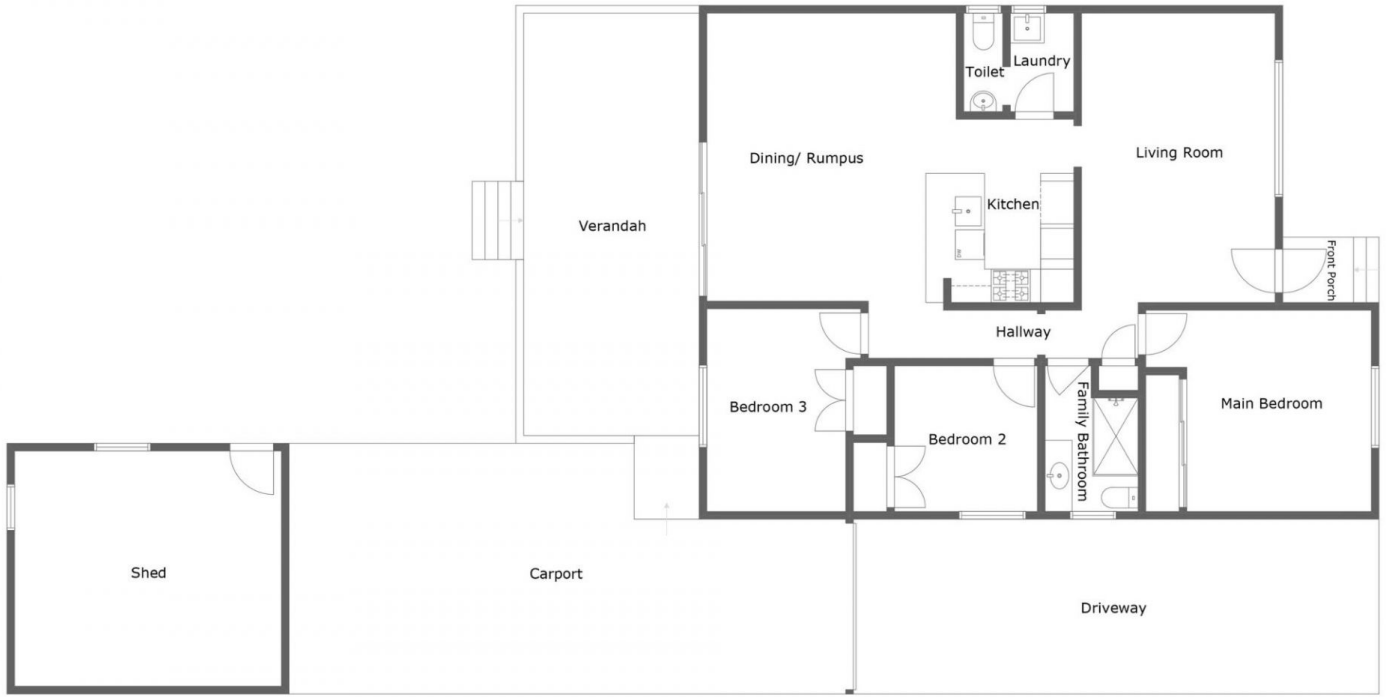
- 3 bedrooms of accommodation | all with ceiling fans, built-in wardrobes, and split system A/C to the main
- Modern family bathroom with second toilet off the laundry
- Spacious living room upon entry
- Air conditioned open plan living to the rear with direct access to the rear entertainer's veranda
- Renovated kitchen complete with large breakfast bar, gas



**Leighton Avery**  
**(02) 9808 1199**



**Shanay Yeo**  
**(02) 9808 1199**



**AwardGroup**  
REAL ESTATE

27 Wharf Road, Melrose Park

Disclaimer | Floor plan measurements are approximate and are for illustrative and guide purposes only. While we cannot doubt the floor plan's accuracy, we make no guarantee, warranty, or representation as to the accuracy and completeness of the floor plan. Interested parties are to rely upon their own enquiries.