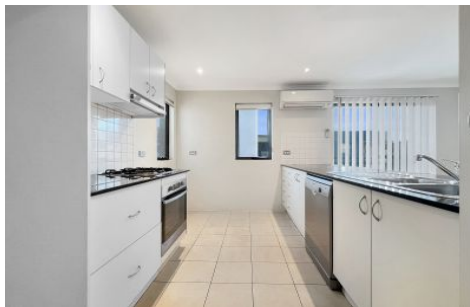




AwardGroup
REAL ESTATE



13/22-26 Herbert Street West Ryde NSW

2 2 1

Set on the top floor of a well-maintained security building, is this warm and spacious north facing apartment overlooking district views and Anzac Park. Boasting only minutes' walk from West Ryde Train Station, Anzac Park and local bus transport options.

Price : \$680 pw

View : <https://www.awardgroup.com.au/lease/nsw/north-ern-suburbs/west-ryde/residential/apartment/8081164>

Property Highlights |

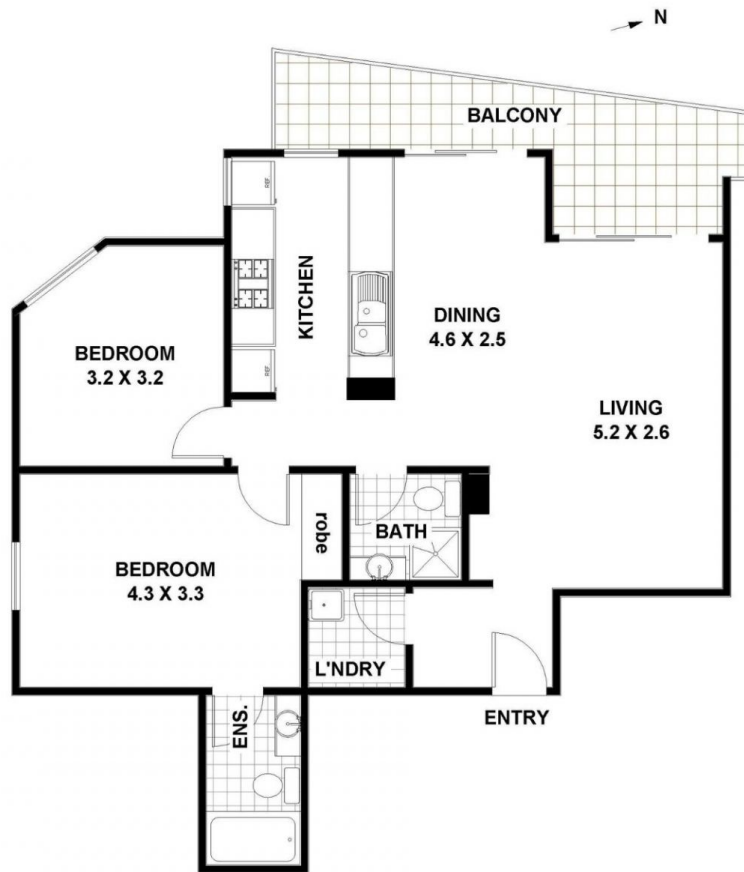
- Two double bedrooms of accommodation | Ensuite and built in wardrobe to the main
- Modern kitchen with gas cooking, granite counter tops, dishwasher and ample storage
- Spacious and light living and dining areas
- Study nook upon entrance
- Large internal laundry room with a dryer
- Lock up garage



Shanay Yeo
(02) 9808 1199



Rentals Team
(02) 9808 1199



AwardGroup
REAL ESTATE

13/22-26 Herbert Street, West Ryde

Disclaimer | Floor plan measurements are approximate and are for illustrative and guide purposes only. While we cannot doubt the floor plan's accuracy, we make no guarantee, warranty, or representation as to the accuracy and completeness of the floor plan. Interested parties are to rely upon their own enquiries.