



Eastwood

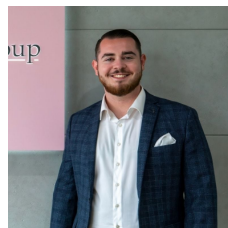
4 2 4

Perched high & mighty on an expansive 695.6sqm parcel, this immaculate brick home offers a versatile floorplan ideal for family living, all while boasting breathtaking wraparound views. Every corner of this charming residence exudes delight, blending its original character with contemporary updates and lush, grassy yards. Situated in an ultra-convenient location on the border of Denistone & Eastwood, it's just a short walk to CBD trains, buses, and excellent shopping. Additionally, it falls within the catchment area for Denistone East Public School, making it an even more desirable family home.

Price : Price Guide | \$2,500,000
Land Size : 695.5 sqm
View : <https://www.awardgroup.com.au/sale/nsw/northern-suburbs/eastwood/residential/house/8096648>

Property Highlights |

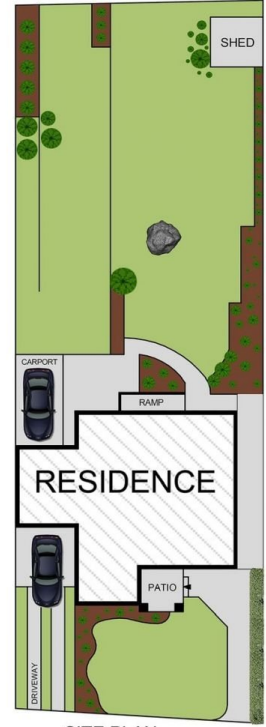
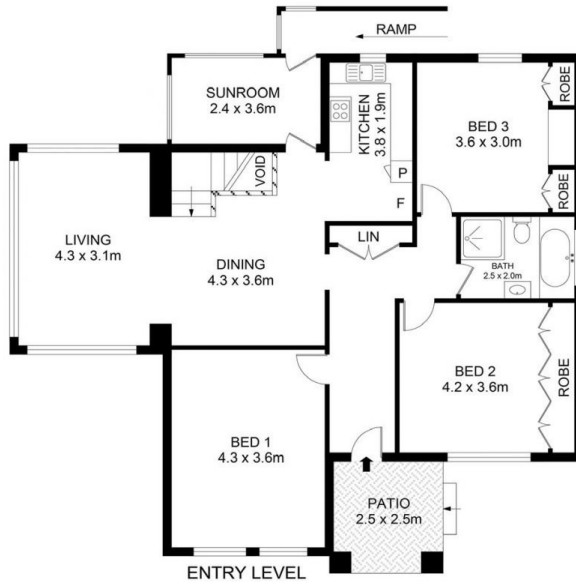
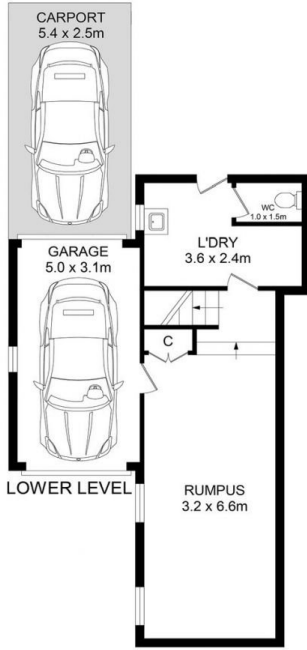
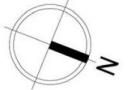
- Full brick construction
- Versatile floorplan for family living
- The charming living & dining room features wall-to-wall



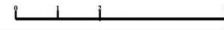
Lochlan McDermott
(02) 9808 1199



David Johnson
(02) 9808 1199



SITE PLAN
(NOT TO SCALE)



Disclaimer

Floor Plan measurements are approximate and are for illustrative purposes only. While we cannot doubt the floor plans accuracy, we make no guarantee, warranty or representation as to the accuracy and completeness of the floor plan