



5/2 Meadow Crescent Meadowbank NSW

2 1 1

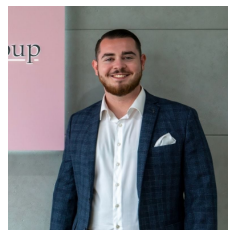
As soon as you step foot through the front door of this renovated two-bedroom unit, you'd be forgiven for thinking you have just entered a property backing the National Park. With its private backdrop over Meadowbank Park, it offers a sizeable layout with free-flowing interiors and is set within a comfortable stroll to Meadowbank train station, Ferry Wharf, and Village Bay Plaza. Surrounded by open parkland reserves and modern-day conveniences, this is an idyllic address to call home.

Type : Unit
Price : \$ 630,000
View : <https://www.awardgroup.com.au/sale/nsw/northern-suburbs/meadowbank/residential/unit/8104620>

Property Highlights |

- Modern kitchen offering loads of cupboard & bench space
- Generous open-plan living room that flows effortlessly out to the private, undercover balcony

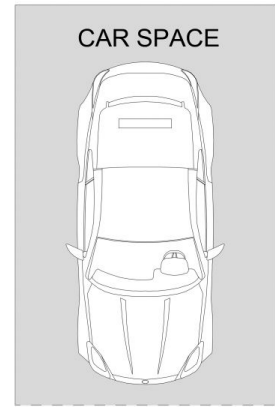
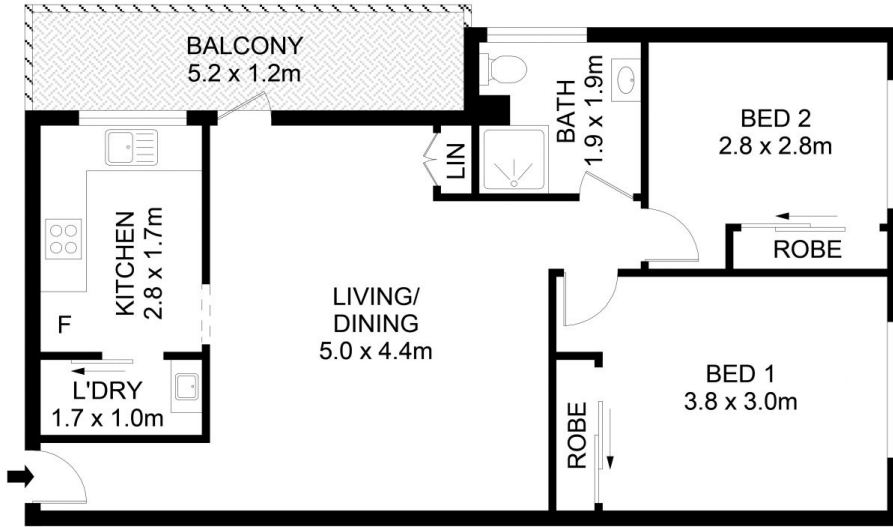
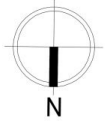
[For full version visit the website](#)



Lochlan McDermott
(02) 9808 1199



David Johnson
(02) 9808 1199



5/22 Meadow Crescent, Meadowbank

Disclaimer
Floor Plan measurements are approximate and are for illustrative purposes only. While we cannot doubt the floor plans accuracy, we make no guarantee, warranty or representation as to the accuracy and completeness of the floor plan

